

# Echoes From Our Lake

September/October 2008  
Volume 107

Walker Lakeshores Landowners Association, 100 Walker Lake Road, Shohola, PA, 18458, phone: 570-296-7788, fax: 570-296-4603, email: wlla@ptd.net, website: www.walkerlake.com

## President's Message

By Bernie Reyes

### INSIDE THIS ISSUE

- 1** President's Message  
News from the WLLA Office
- 2** Treasurer's Report  
Youth Group Forming
- 3** Calendar of Fall Events
- 4** Gas Drilling  
Caterpillar Control
- 5** Splash Back
- 6** 50's Dance  
Kids Halloween Party

### Board of Directors October Meeting Time Change

Friday Oct. 17, 2008

1:00 pm

at the Read Clubhouse  
Members are welcome to  
attend Directors meetings

### Jazz Concert

The Jazz concert on September 26, 2008 was a resounding success. We are very fortunate in having Bill Mays and Andy Milne give of their considerable talent and valuable time to raise money for our youth program. A total of \$454.00 was raised which will help get this program off to a running start. Thanks to all of the helpers for all their time and effort to make this night a special one.

Bill and Andy have agreed to have this concert become an annual event. I hope that you will be there next time to share an evening of world class music with your friends and neighbors.

### Beaches

We have been visited for the second year in a row by representatives from the Pennsylvania Board of Health. The beaches are in need of some additional modifications such as:

1. Float markers and ropes to separate five feet from deeper water
2. A Porta-Potty must be located at Sandy Beach
3. Potable water must be available at Sandy Beach
4. Structural changes to the beaches
5. Lifesaving equipment
6. First Aid Kits

*President's Message* continued on page 2

## News from the WLLA Office

### Change of Address?

Please let us know in the office if you have a change of address otherwise the Association is charged 50 cents for each notification by the Post Office. It may not seem like much, but it does add up!

### Office to be closed

The WLLA office will be closed from December 25<sup>th</sup> through January 1<sup>st</sup> and will re-open on January 2<sup>nd</sup>.

## Treasurer's Report

By Art Politano

At the last scheduled General Membership meeting held on September 20, 2008, the WLLA budget for 2009 was passed and approved. The Board Of Directors held their meeting prior to the General Membership meeting on the same date.

Although the WLLA 2009 budget was passed and approved, it is unfortunate that members of the community only numbered approximately seven (7) who actually showed up for this very important

Membership meeting for the purpose of passing the next year's budget is probably the most important meeting held during the year. And once again, the issue of apathy was very present at the September 20<sup>th</sup> meeting. To have only seven (7) community members show up for this meeting when Walker Lake has well over 400 community members, is a definite showing of membership apathy. Is there a reason for this? Or is it just a fact that the community membership totally trusts the actions of the Board Of Directors, and knows that the Board Of Directors has the very best interests of the community in mind? I would like to hope that the latter is true, and there are other reasons, (other than definitive apathy), that more members do not show up for the General Membership meetings.

I thank the Board of Directors who so unselfishly gave their time and efforts in working on the 2009 WLLA budget, and also thanks to the community members who showed up for the meeting and gave their input and votes.

## Calling All Kids!!!

Are you a kid or do you know one living at Walker Lake? If so, you should know that a group of kids (and a couple of grownups) is starting a Youth Group. We have a clubhouse, a lake, a tennis court, beaches and a new generation of Walker Lakers coming up. The idea is to create this group so that kids can make their own events by making use of the facilities and the great people that we have right here in our neighborhood. This is a perfect way for families to "make our own fun", right here, close to home. Call the office to get involved.

To kick it off right, we will have a Halloween Party on Saturday, October 25 (see page 6) You can help start our youth group by hosting a game or donating prizes. Some game ideas: Bobbing for Apples, Witches Wheel, The Mummy Ring Toss, Get the Ghost, Jack o' Lantern Dress-Up. You probably have some ideas we haven't thought of yet. **Call the office to ask how you can help make this party a SCREEEAM!!!**

### Good Neighbors Corner

WLLA Rules & Regs prohibit accumulation of anything unsightly, such as trash, derelict junk cars, or other non-functional motorized vehicles outside a home.

### President's Message *from page 1*

The reports are available at the office to be reviewed if you are interested. As a result, we must find ways to comply with these requirements. The most problematic of all is to prevent vandalism and theft. Porta-Potties are especially prone to vandalism. Safety and lifesaving equipment gets stolen. We will have to find a means to minimize these risks but, this also requires expenditure of funds to do so. These changes are required to be in place for the next swimming season. We will be coming up with a plan to comply and secure the beaches. Any and all suggestions are welcome. We need a committee formed to make recommendations and to devise a workable plan. If this does not happen we will be forced to close the beaches.

### Winter Approaches

As the winter season nears, we must keep a few things in mind. Snow tires for your car are a must. Studded snow tires are better. The kind of winter storms that are prevalent here involve ice storms, heavy wet snow and ice storms closely followed by snow. These all lead to hazardous travel over treacherous roads. Please be prepared and slow down during the winter months. Keep your vehicle in your driveway and off Association roads. Our snow removal contractor (Precision Landscaping) must have unobstructed access to the roads for snow and ice removal. Any vehicles on the road will be subject to towing.



## Gas Drilling in Our Backyards

By Kathy Kilmer

It's here in Pike County, no longer something that is someone else's problem. To date, five (5) gas-drilling leases have been signed and recorded in Pike County. Gas companies are contacting anyone who owns 10 acres or more. As you know, several neighboring tracts of land that are quite large, which could potentially support several gas-drilling sites border Walker Lake. If this is not on your radar, it's time to wake up and smell the gas!

First of all, educate yourself about this issue. It is vital that we do everything we can to protect our environment and our health. The more informed we become, the more focused we can be to protect this area that is our home.

For example, large volumes of water (millions of gallons) are used in the process of gas extraction called hydrofracturing. That water will have to come from somewhere (our streams, ponds, lakes, and aquifers). Hydrofracturing also uses over 250 chemicals injected at high pressure to fracture the shale to release the gas underground. Changes to EPA regulations in 2005 **exempt** gas companies from having to reveal what chemicals they use. Actual analyses of these chemicals have been obtained as a result of "blowouts" of fracturing fluids at well sites. A description of these chemicals can be found at [www.EndocrineDisruption.org](http://www.EndocrineDisruption.org). These are not chemicals that you want coming out of your faucet. Apart from the impact on groundwater resources, we need to think about the hundreds of thousands of gallons of waste fluids produced from the drilling. This waste fluid is held in large pits and must be treated as toxic industrial waste. It is an unfortunate reality that human error, industry shortcuts to save costs, and lack of oversight and regulation will not protect us from environmental hazards that could occur.

Water pollution, air pollution, noise pollution, serious health hazards, soil erosion and runoff problems, loss of habitat for wildlife, and loss of property values are the issues we are facing here, in our own backyards, now.

We are in the process of organizing a meeting in our community with others who are actively working to protect this area. There will be an announcement of this meeting on [www.walkerlake.com](http://www.walkerlake.com) and on the bulletin boards in our community. In the meantime, learn all you can and talk to your neighbors about this.

Information for this article was obtained from the following sources: [www.damascuscitizens.org](http://www.damascuscitizens.org), [www.EndocrineDisruption.org](http://www.EndocrineDisruption.org), Pennsylvania Dept. of Environmental Protection at [www.depweb.state.pa.us](http://www.depweb.state.pa.us), keyword "Oil and Gas". The River Reporter has an on-going series on this issue. See [www.riverreporter.com](http://www.riverreporter.com). Visit these sites for more information and links. If you don't have access to a computer and want to learn more, information will be available in the WLLA office.

## Caterpillar Control

We have seen destruction from three different caterpillars eating our trees. In the early spring, tent caterpillars and gypsy moth caterpillar larva are evident. Late summer trees display webworm nests at the ends of branches.

Tent caterpillars make nests in the branches of our birch and cherry trees. The caterpillars emerge and feed on the budding leaves early, then the moths hatch early and no more damage is done. The leaves can regenerate and the tree survives.

The Gypsy Moth caterpillar larva survives over the winter as soft brown masses on trees, decks, logs, shingles, etc. Removing them and burning the masses can destroy these egg masses. Sprays such as Sevin will kill them and all other insects.

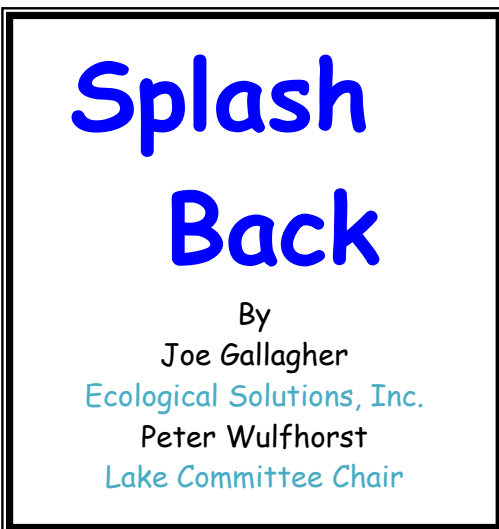
In early spring, Bt, *Bacillus thurgensis*, applied by aerial spraying, will destroy any leaf-eating caterpillars but not other insects. Bt lasts one week optimally. The caterpillars form twice  
*Caterpillar Control* continued on page 5

*Caterpillar Control* continued from page 4

a season, approximately three weeks apart. Bt spraying must be done twice precisely. Weather often prohibits this precision. Entire properties must be sprayed, as winds will blow the caterpillars or eggs into adjoining areas.

The state has a program administered by the Pike County Conservation District and we have made application. They will approve or disapprove of our application depending on their gypsy moth egg count of our property. We should know about approval sometime in October or November when they report their finding along with the costs. This program, spraying with Bt, is only a suppression program because they will only spray once. We will need to spray again at our cost. The second spraying can be with Bt, Sevin, or Dimilin. Private sprayers will be asked for bids. If the state turns us down we should spray twice at our own cost. Owners will have to be assessed for this program.

If we do not spray, there can be massive loss of trees. Although trees can survive destruction by tent caterpillars and webworms, they cannot survive two successive years of defoliation by gypsy moth caterpillars.



## Challenging Summer?

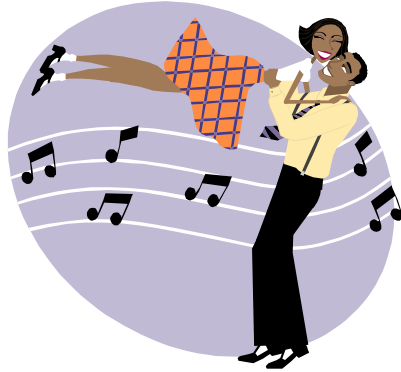
Now that Fall has arrived, the lake committee and our consultant are thinking about what has been happening at Walker Lake this past summer. Overall, it was a good season. We treated many of the water lilies and watershield that were growing around the docks. Water quality was monitored on a monthly basis, and the results of this sampling were very similar to what we had observed in previous years. Total phosphorous concentrations were higher than in the past, which most likely caused the blue-green algae bloom that persisted throughout much of the summer. This month we will be sampling the fishery and developing a five year management plan to aid in the development of an on-going fish stocking program for the lake. The

challenging part of managing a resource such as Walker Lake involves creating a balance between the amount of “acceptable” aquatic plant growth, maintaining good water quality and clarity, and maintaining a “healthy” and self-sustaining fishery.

Plant growth, water quality/clarity, and a “healthy” fishery are all closely interrelated. Aquatic plant growth provides much needed habitat for fish and helps remove nutrients from the water, which in turn maintains water quality. However, too much plant growth reduces the quality of habitat provided for fish and restricts other water uses such as swimming and boating. Our challenge is to maintain enough aquatic vegetation to maintain good water quality/clarity and provide the optimum amount of fish habitat, while controlling the amount of plant growth in areas that are utilized primarily for swimming and boating.

This type of multi-use management planning requires input from everyone in the community. There has been discussion about limiting the chemical applications to Walker Lake. There will be differing opinions amongst residents of Walker Lake whether we should or should not apply chemicals to control aquatic plant growth. This discussion needs to be shared with the Board of Directors. Therefore, we encourage everyone to think about what matters most to them as far as how the lake is managed. Over the winter the lake committee will be working with our consultant to develop a management plan to address the specific concerns of the majority of individuals in your community. Hopefully with your help and input we all can continue to make Walker Lake one of the best lakes in the Poconos. Have a great Fall!!!

## **50's Dance at the Lake**



**Saturday October 11<sup>th</sup>**

\$5 burgers, fries, floats, tunes \$5  
Read Clubhouse 6 – 10 pm



## **Save the Dates!!!!**

### **Walker Lake has formed a Youth Group!**

Events are scheduled for

**Saturday, October 25th from 7pm to 9pm**

At Walker Lake's Read Clubhouse

Come in Costume for FUN & GAMES

RSVP- Walker Lake Office – (570) 296-7788

## **Halloween, Friday, October 31st**

Walker Lake Trick or Treating 6 pm to 9pm

Welcome TRICK or TREATERS with your  
front porch light on!



WALKER LAKE GALLERY CAFE  
PRESENTS

# Neighbors Games

Join Us & Play!

Friday, October 17, 2008

Read Clubhouse - 6:30-10:00 pm

# CARD-BINGO

or

BACKGAMMON  
BRIDGE &/OR CANASTA  
SCRABBLE

Bring Your Own Drinks/Food & Deck of Cards

Call Judy Mays for details - 296-2134